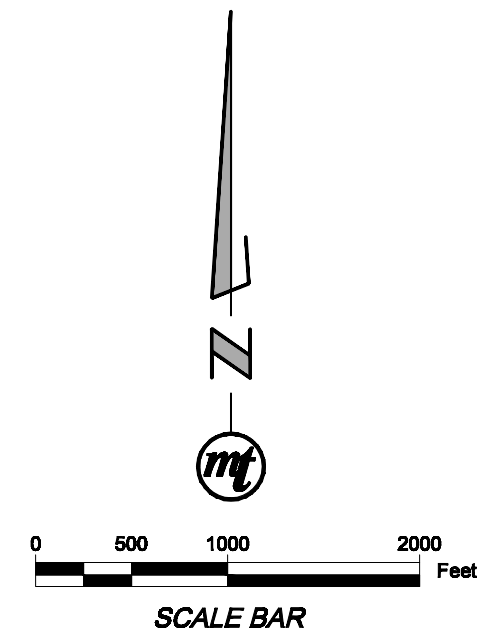


# RECORD OF SURVEY

A PORTION OF SECTIONS 1 & 12 T. 6 S., R. 2 W., SECTIONS 6, 7, 8, 17 & 18, T. 6 S., R. 1 W. M. D. B. & M.,  
 IN THE CITIES OF SAN JOSE AND SUNNYVALE,  
 IN SANTA CLARA COUNTY, STATE OF CALIFORNIA  
 SCALE: 1"=1000' MAY 2016



## COUNTY SURVEYOR'S STATEMENT

THIS MAP HAS BEEN EXAMINED IN ACCORDANCE WITH SECTION 8766 OF THE PROFESSIONAL LAND SURVEYORS ACT THIS \_\_\_\_\_ DAY OF \_\_\_\_\_, 2016.

GWENDOLYN GEE, LS 6780  
 COUNTY SURVEYOR  
 SANTA CLARA, CALIFORNIA

## RECORDER'S STATEMENT

FILED THIS \_\_\_\_\_ DAY OF \_\_\_\_\_, 2016, AT \_\_\_\_\_ M.  
 IN BOOK \_\_\_\_\_ OF MAPS AT PAGE(S) \_\_\_\_\_, AT THE  
 REQUEST OF MARK THOMAS AND COMPANY.

FILE No. \_\_\_\_\_  
 FEE: \$ \_\_\_\_\_  
 REGINA M. ALCOMENDRAS, COUNTY RECORDER

By: \_\_\_\_\_  
 DEPUTY

## SURVEYOR'S STATEMENT

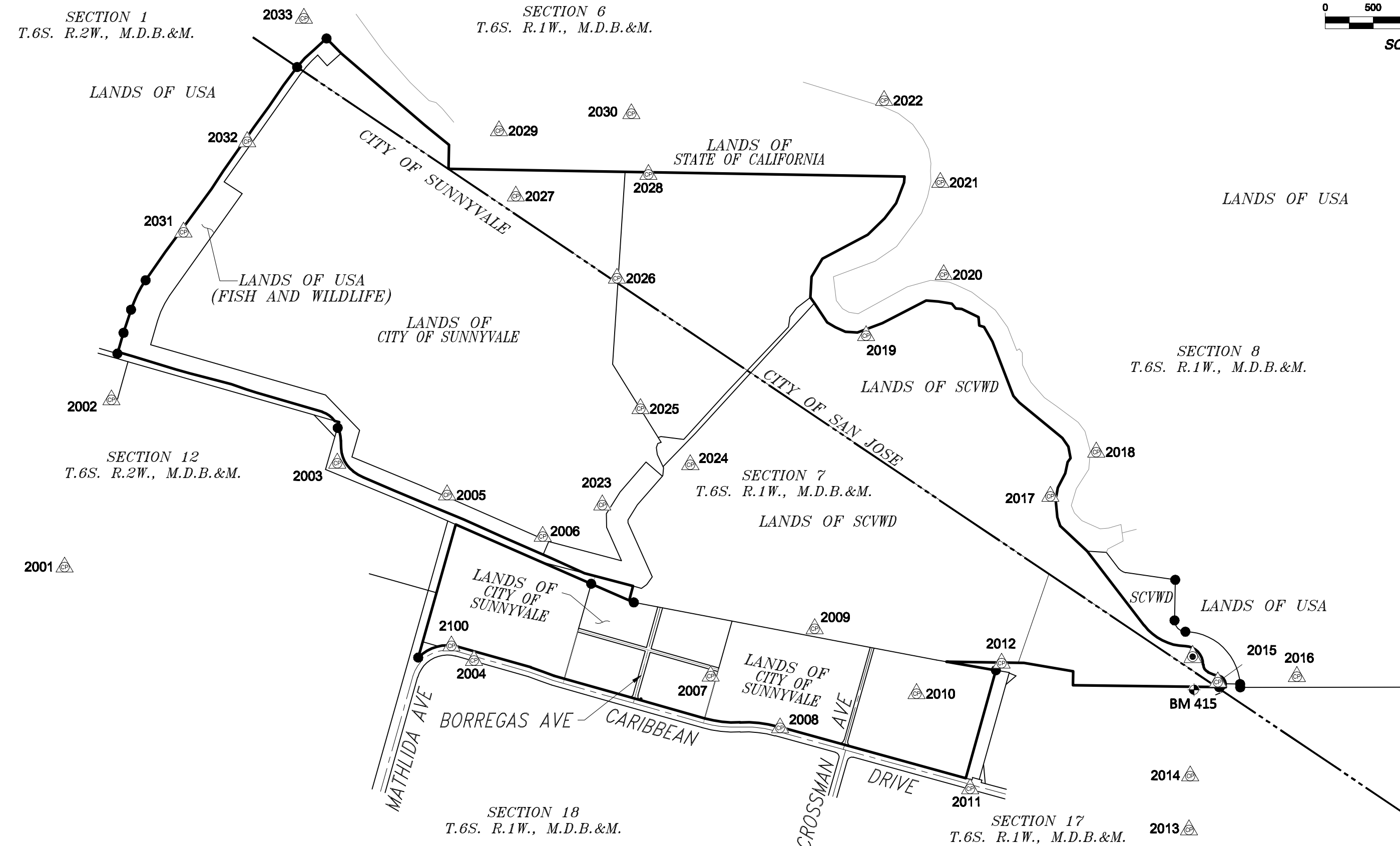
THIS MAP CORRECTLY REPRESENTS A SURVEY MADE BY ME OR UNDER MY DIRECTION IN CONFORMANCE WITH THE REQUIREMENTS OF THE PROFESSIONAL LAND SURVEYOR'S ACT AT THE REQUEST OF CAROLLO ENGINEERS, NOVEMBER 2013.



MARK THOMAS & COMPANY, INC.  
*Matthew J. Stringer*  
 MATTHEW J. STRINGER, LS 8151

## SURVEYOR'S NOTES

1. THIS RECORD OF SURVEY IS BEING FILED IN COMPLIANCE WITH SECTION 8762, PARAGRAPH A-E OF THE PROFESSIONAL LAND SURVEYOR'S ACT.
2. ALL DISTANCES SHOWN ARE IN FEET UNLESS OTHERWISE NOTED.



## BASIS OF BEARINGS

THE PROJECT HORIZONTAL DATUM IS BASED UPON THE NORTH AMERICAN DATUM OF 1983 (NAD83). CALIFORNIA COORDINATE SYSTEM ZONE 3, EPOCH 2010.00, U.S. SURVEY FEET. GROUND DISTANCES ARE BY AN AVERAGE COMBINED FACTOR OF 0.9999502 TO OBTAIN GRID LEVEL DISTANCES. SEE SHEET 2 FOR PROJECT CONTROL.

## LEGEND

- PROPERTY BOUNDARY
  - PROPERTY LINES
  - CITY LIMITS
  - △ SET CONTROL POINT
  - FOUND SURVEY MONUMENT AS NOTED
  - ⊙ CITY OF SUNNYVALE MONUMENT FOUND IN WELL AS NOTED
  - ⊕ BENCHMARK
  - SCVWD SANTA CLARA VALLEY WATER DISTRICT
- SEE SHEET 2 FOR PROJECT CONTROL  
 SEE SHEET 4 FOR LINE/CURVE TABLES AND REFERENCES

COUNTY GRID NO. 33-23-80, 81, 82  
 33-24-80, 81, 82  
 34-25-79, 80, 81  
 34-26-79, 80, 81



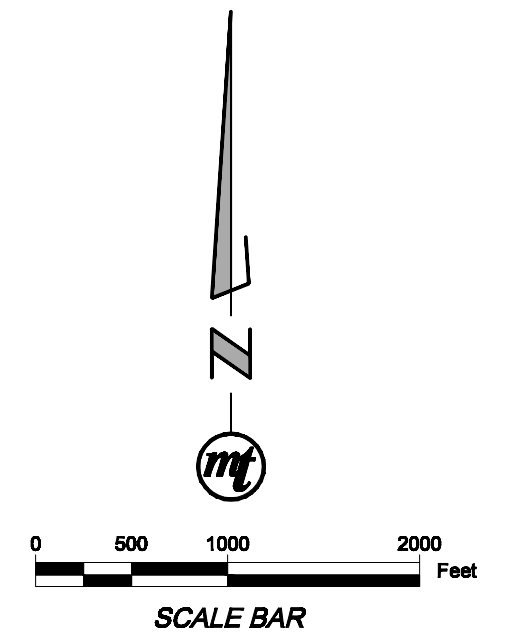
MARK THOMAS & COMPANY, INC.  
 Providing Engineering, Surveying, and Planning Services  
 1960 Zanker Road  
 San Jose, CA 95112  
 (408) 453-5373

**PROJECT CONTROL HORIZONTAL CONTROL**

PROJECT CONTROL				
POINT NO.	NORTHING	EASTING	ELEVATION	DESCRIPTION
1001	1978333.34	6127164.05	14.37	3/4" IP W/PLUG
2001	1979266.29	6115425.45	9.34	MAGNAIL N SHINNER
2002	1981006.62	6115913.48	3.47	SURVEY SPIKE
2003	1980347.69	6118262.78	4.84	REBAR W/CAP (5.07)
2004	1978295.14	6119685.73	4.13	MAGNAIL N SHINNER
2005	1980017.16	6119406.62	7.57	REBAR W/CAP (7.86)
2006	1979585.58	6120400.66	7.80	REBAR W/CAP (8.04)
2007	1978132.11	6122148.97	4.91	SPIKE W/WASHER
2008	1977593.56	6122870.42	3.76	MAGNAIL N SHINNER
2009	1978625.13	6123230.41	9.93	REBAR W/PLUG (10.16)
2010	1977949.52	6124291.57	66.12	3/4 IP W/PLUG
2011	1976959.94	6124847.65	11.19	MAGNAIL N SHINNER
2012	1978266.43	6125174.39	10.43	REBAR W/PLUG (10.71)
2013	1976532.33	6127126.09	10.27	REBAR W/CAP (10.46)
2014	1977093.03	6127138.64	4.90	MAGNAIL N SHINNER
2015	1978070.09	6127425.36	11.80	REBAR W/PLUG (11.95)
2016	1978127.66	6128247.33	13.13	3/4 IP W/PLUG (13.37)
2017	1980002.69	6125683.14	13.65	REBAR W/PLUG (13.95)
2018	1980462.73	6126161.36	11.96	3/4 IP W/PLUG (12.24)
2019	1981673.82	6123765.57	12.22	REBAR W/PLUG (12.49)
2020	1982308.51	6124573.33	12.26	3/4 IP W/PLUG (12.59)
2021	1983268.69	6124538.03	11.78	3/4 IP W/PLUG (12.08)
2022	1984120.65	6123952.99	10.46	3/4 IP W/PLUG (10.81)
2023	1979912.36	6121021.81	7.39	REBAR W/CAP (7.69)
2024	1980330.91	6121936.99	14.75	REBAR W/PLUG (14.98)
2025	1980914.95	6121418.52	6.90	RRSPIKE
2026	1982271.17	6121172.89	7.74	100D
2027	1983125.64	6120121.79	7.08	100D
2028	1983351.37	6121500.06	12.18	REBAR W/CAP (12.35)
2029	1983805.85	6119946.94	11.76	3/4 IP W/PLUG (12.11)
2030	1983983.63	6121322.33	11.21	3/4 IP W/PLUG (11.66)
2031	1982750.60	6116662.48	4.78	SPIKE W/WASHER
2032	1983692.13	6117327.30	4.39	SPIKE W/WASHER
2033	1984975.73	6117917.22	13.12	3/4 IP W/PLUG (13.45)
2100	1978446.69	6119451.54	8.20	CUT X

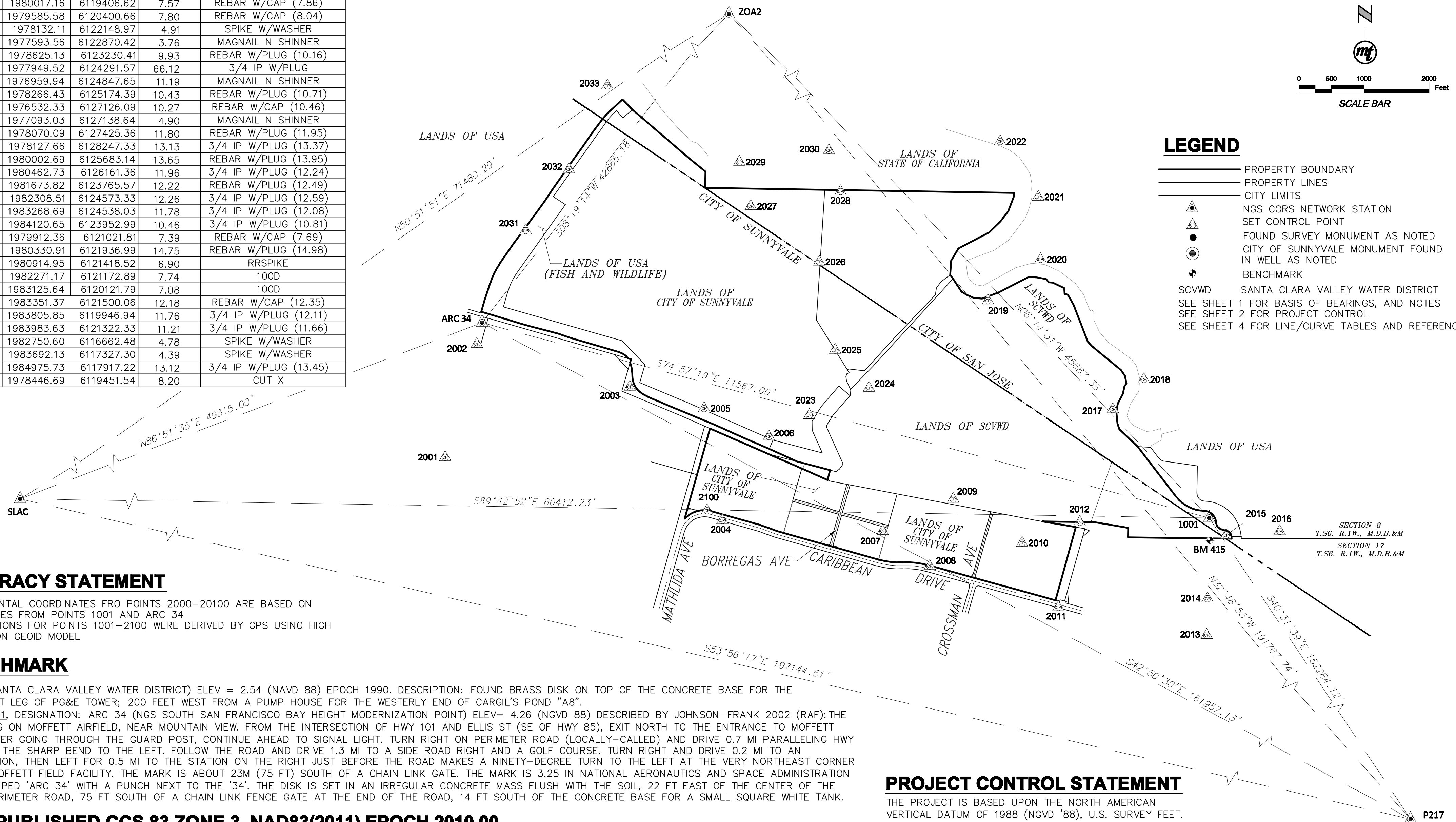
# RECORD OF SURVEY

A PORTION OF SECTIONS 1 & 12 T. 6 S., R. 2 W., SECTIONS 6, 7, 8, 17 & 18, T. 6 S., R. 1 W. M. D. B. & M.,  
 IN THE CITIES OF SAN JOSE AND SUNNYVALE,  
 IN SANTA CLARA COUNTY, STATE OF CALIFORNIA  
 SCALE: 1"=1000' MAY 2016



**LEGEND**

- PROPERTY BOUNDARY
- PROPERTY LINES
- CITY LIMITS
- ▲ NGS CORS NETWORK STATION
- ▲ SET CONTROL POINT
- FOUND SURVEY MONUMENT AS NOTED
- CITY OF SUNNYVALE MONUMENT FOUND IN WELL AS NOTED
- ⊕ BENCHMARK
- SCVWD SANTA CLARA VALLEY WATER DISTRICT
- SEE SHEET 1 FOR BASIS OF BEARINGS, AND NOTES
- SEE SHEET 2 FOR PROJECT CONTROL
- SEE SHEET 4 FOR LINE/CURVE TABLES AND REFERENCES



**ACCURACY STATEMENT**

- HORIZONTAL COORDINATES FRO POINTS 2000-20100 ARE BASED ON DOUBLE TIES FROM POINTS 1001 AND ARC 34
- ELEVATIONS FOR POINTS 1001-2100 WERE DERIVED BY GPS USING HIGH RESOLUTION GEOID MODEL

**BENCHMARK**

BM415 (SANTA CLARA VALLEY WATER DISTRICT) ELEV = 2.54 (NAVD 88) EPOCH 1990. DESCRIPTION: FOUND BRASS DISK ON TOP OF THE CONCRETE BASE FOR THE SOUTHEAST LEG OF PG&E TOWER; 200 FEET WEST FROM A PUMP HOUSE FOR THE WESTERLY END OF CARGIL'S POND "A8".

PID\_DG6881, DESIGNATION: ARC 34 (NGS SOUTH SAN FRANCISCO BAY HEIGHT MODERNIZATION POINT) ELEV= 4.26 (NGVD 88) DESCRIBED BY JOHNSON-FRANK 2002 (RAF): THE STATION IS ON MOFFETT AIRFIELD, NEAR MOUNTAIN VIEW. FROM THE INTERSECTION OF HWY 101 AND ELLIS ST (SE OF HWY 85), EXIT NORTH TO THE ENTRANCE TO MOFFETT FIELD. AFTER GOING THROUGH THE GUARD POST, CONTINUE AHEAD TO SIGNAL LIGHT. TURN RIGHT ON PERIMETER ROAD (LOCALLY-CALLED) AND DRIVE 0.7 MI PARALLELING HWY 101 UNTIL THE SHARP BEND TO THE LEFT. FOLLOW THE ROAD AND DRIVE 1.3 MI TO A SIDE ROAD RIGHT AND A GOLF COURSE. TURN RIGHT AND DRIVE 0.2 MI TO AN INTERSECTION, THEN LEFT FOR 0.5 MI TO THE STATION ON THE RIGHT JUST BEFORE THE ROAD MAKES A NINETY-DEGREE TURN TO THE LEFT AT THE VERY NORTHEAST CORNER OF THE MOFFETT FIELD FACILITY. THE MARK IS ABOUT 23M (75 FT) SOUTH OF A CHAIN LINK GATE. THE MARK IS 3.25 IN NATIONAL AERONAUTICS AND SPACE ADMINISTRATION DISK STAMPED 'ARC 34' WITH A PUNCH NEXT TO THE '34'. THE DISK IS SET IN AN IRREGULAR CONCRETE MASS FLUSH WITH THE SOIL, 22 FT EAST OF THE CENTER OF THE PAVED PERIMETER ROAD, 75 FT SOUTH OF A CHAIN LINK FENCE GATE AT THE END OF THE ROAD, 14 FT SOUTH OF THE CONCRETE BASE FOR A SMALL SQUARE WHITE TANK.

**NGS PUBLISHED CCS 83 ZONE 3, NAD83(2011) EPOCH 2010.00**

NAME	PID	NORTHING	EASTING	ELEVATION	COMBINED SCALE FACTOR	MAPPING ANGLE	DESCRIPTION
P217	DN7557	1862583.07	6226120.24	-	0.99998097	00°42'16.0"	IRON PIPE
SLAC	DN7479	1978634.36	6066752.57	-	0.99993605	01°02'36.2"	4X4 POST
ZOA2	DE6356	2023749.81	6122196.49	-	0.99993628	00°55'41.0"	NAIL & SHINER
ARC34	DG6881	1981335.86	6115993.54	4.2'	0.99995007	00°56'22.9"	3" SURVEY BRASS DISK W/PUNCH "ARC 34" IN TOP OF CONCRETE MONUMENT

**PROJECT CONTROL STATEMENT**

THE PROJECT IS BASED UPON THE NORTH AMERICAN VERTICAL DATUM OF 1988 (NGVD '88), U.S. SURVEY FEET.

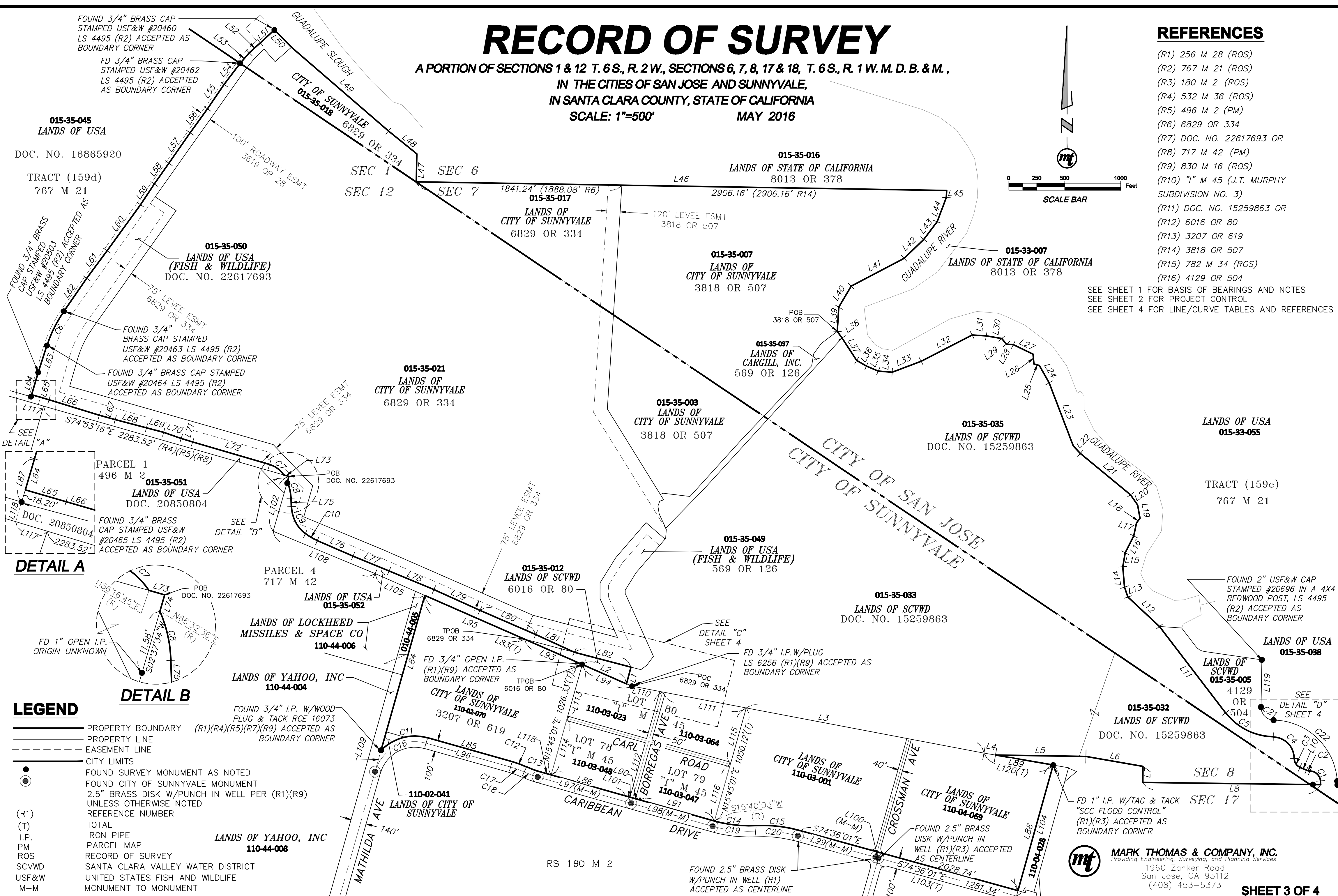
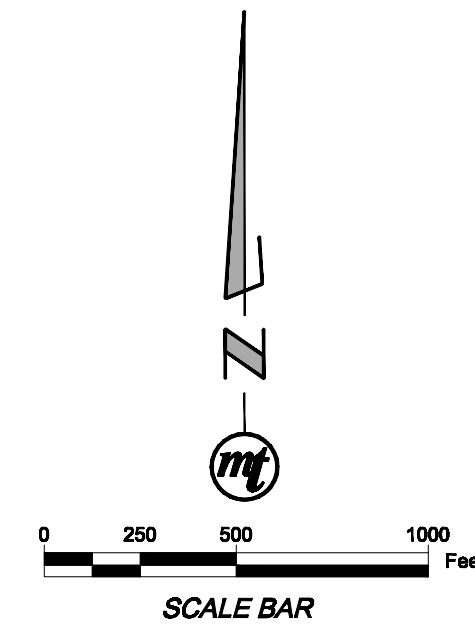
**MARK THOMAS & COMPANY, INC.**  
 Providing Engineering, Surveying, and Planning Services  
 1960 Zanker Road  
 San Jose, CA 95112  
 (408) 453-5373

# RECORD OF SURVEY

A PORTION OF SECTIONS 1 & 12 T. 6 S., R. 2 W., SECTIONS 6, 7, 8, 17 & 18, T. 6 S., R. 1 W. M. D. B. & M.,  
 IN THE CITIES OF SAN JOSE AND SUNNYVALE,  
 IN SANTA CLARA COUNTY, STATE OF CALIFORNIA  
 SCALE: 1"=500' MAY 2016

## REFERENCES

- (R1) 256 M 28 (ROS)
  - (R2) 767 M 21 (ROS)
  - (R3) 180 M 2 (ROS)
  - (R4) 532 M 36 (ROS)
  - (R5) 496 M 2 (PM)
  - (R6) 6829 OR 334
  - (R7) DOC. NO. 22617693 OR
  - (R8) 717 M 42 (PM)
  - (R9) 830 M 16 (ROS)
  - (R10) "I" M 45 (J.T. MURPHY SUBDIVISION NO. 3)
  - (R11) DOC. NO. 15259863 OR
  - (R12) 6016 OR 80
  - (R13) 3207 OR 619
  - (R14) 3818 OR 507
  - (R15) 782 M 34 (ROS)
  - (R16) 4129 OR 504
- SEE SHEET 1 FOR BASIS OF BEARINGS AND NOTES  
 SEE SHEET 2 FOR PROJECT CONTROL  
 SEE SHEET 4 FOR LINE/CURVE TABLES AND REFERENCES

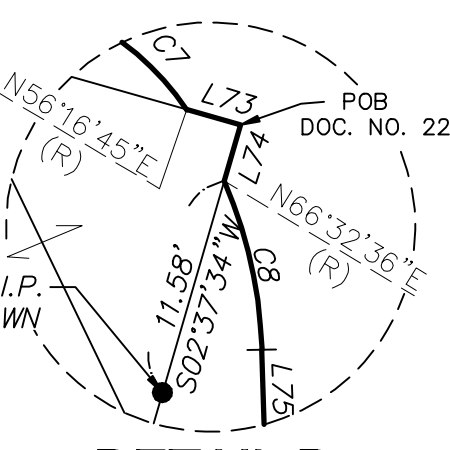


**015-35-045**  
 LANDS OF USA  
 DOC. NO. 16865920  
 TRACT (159d)  
 767 M 21

**015-35-050**  
 LANDS OF USA  
 (FISH & WILDLIFE)  
 DOC. NO. 22617693

**015-35-051**  
 LANDS OF USA  
 DOC. 20850804

### DETAIL A



### DETAIL B

### LEGEND

- PROPERTY BOUNDARY
- - - PROPERTY LINE
- - - EASEMENT LINE
- CITY LIMITS
- FOUND SURVEY MONUMENT AS NOTED
- FOUND CITY OF SUNNYVALE MONUMENT
- 2.5" BRASS DISK W/PUNCH IN WELL PER (R1)(R9)
- UNLESS OTHERWISE NOTED
- REFERENCE NUMBER
- (R1)
- (T)
- I.P.
- PM
- ROS
- SCVWD
- USF&W
- M-M
- FOUND 3/4" I.P. W/WOOD PLUG & TACK RCE 16073 (R1)(R4)(R5)(R7)(R9) ACCEPTED AS BOUNDARY CORNER
- FOUND 3/4" BRASS CAP STAMPED USF&W #20460 LS 4495 (R2) ACCEPTED AS BOUNDARY CORNER
- FOUND 3/4" BRASS CAP STAMPED USF&W #20462 LS 4495 (R2) ACCEPTED AS BOUNDARY CORNER
- FOUND 3/4" BRASS CAP STAMPED USF&W #20463 LS 4495 (R2) ACCEPTED AS BOUNDARY CORNER
- FOUND 3/4" BRASS CAP STAMPED USF&W #20464 LS 4495 (R2) ACCEPTED AS BOUNDARY CORNER
- FOUND 3/4" BRASS CAP STAMPED USF&W #20465 LS 4495 (R2) ACCEPTED AS BOUNDARY CORNER
- FOUND 2" USF&W CAP STAMPED #20696 IN A 4X4 REDWOOD POST, LS 4495 (R2) ACCEPTED AS BOUNDARY CORNER
- FOUND 1" I.P. W/TAG & TACK "SCC FLOOD CONTROL" (R1)(R3) ACCEPTED AS BOUNDARY CORNER
- FOUND 2.5" BRASS DISK W/PUNCH IN WELL (R1)(R3) ACCEPTED AS CENTERLINE
- FOUND 3/4" OPEN I.P. (R1)(R9) ACCEPTED AS BOUNDARY CORNER
- FOUND 3/4" I.P.W/PLUG LS 6256 (R1)(R9) ACCEPTED AS BOUNDARY CORNER
- FOUND 1" I.P. W/TAG & TACK "SCC FLOOD CONTROL" (R1)(R3) ACCEPTED AS BOUNDARY CORNER
- FOUND 2.5" BRASS DISK W/PUNCH IN WELL (R1) ACCEPTED AS CENTERLINE

**MARK THOMAS & COMPANY, INC.**  
 Providing Engineering, Surveying, and Planning Services  
 1960 Zanker Road  
 San Jose, CA 95112  
 (408) 453-5373



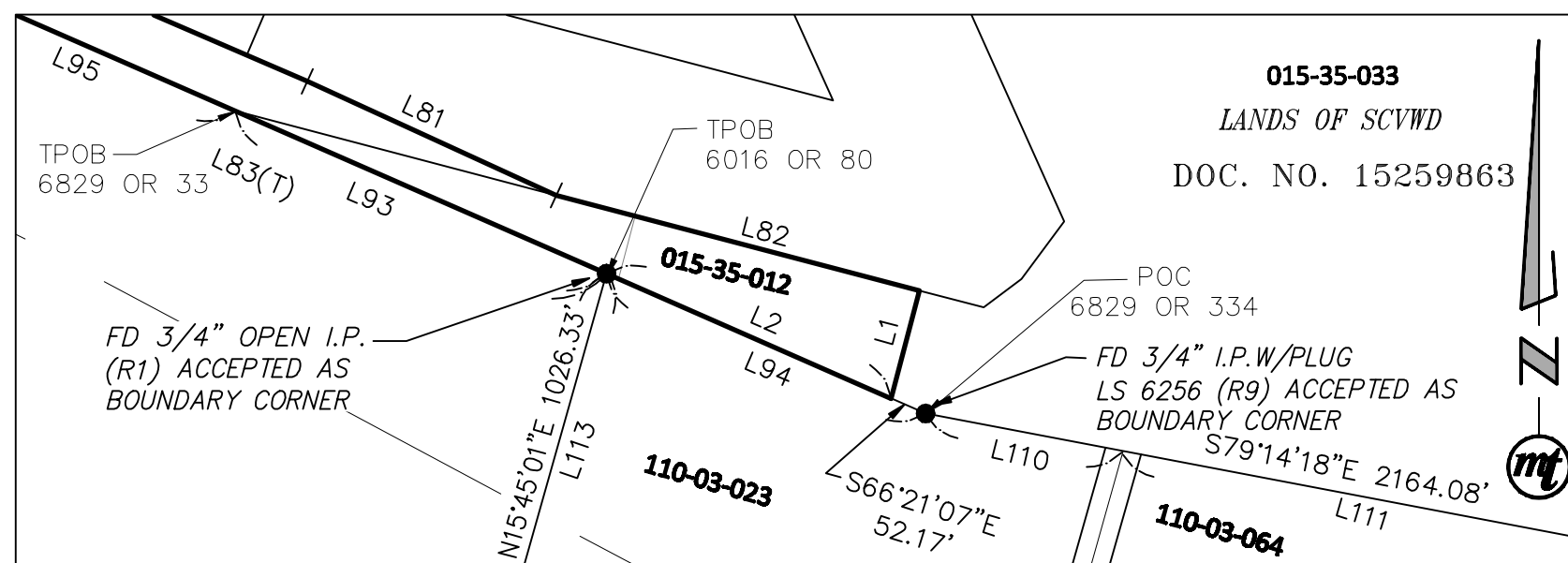
# RECORD OF SURVEY

A PORTION OF SECTIONS 1 & 12 T. 6 S., R. 2 W., SECTIONS 6, 7, 8, 17 & 18, T. 6 S., R. 1 W. M. D. B. & M.,  
 IN THE CITIES OF SAN JOSE AND SUNNYVALE,  
 IN SANTA CLARA COUNTY, STATE OF CALIFORNIA  
 SCALE: NOT TO SCALE MAY 2016

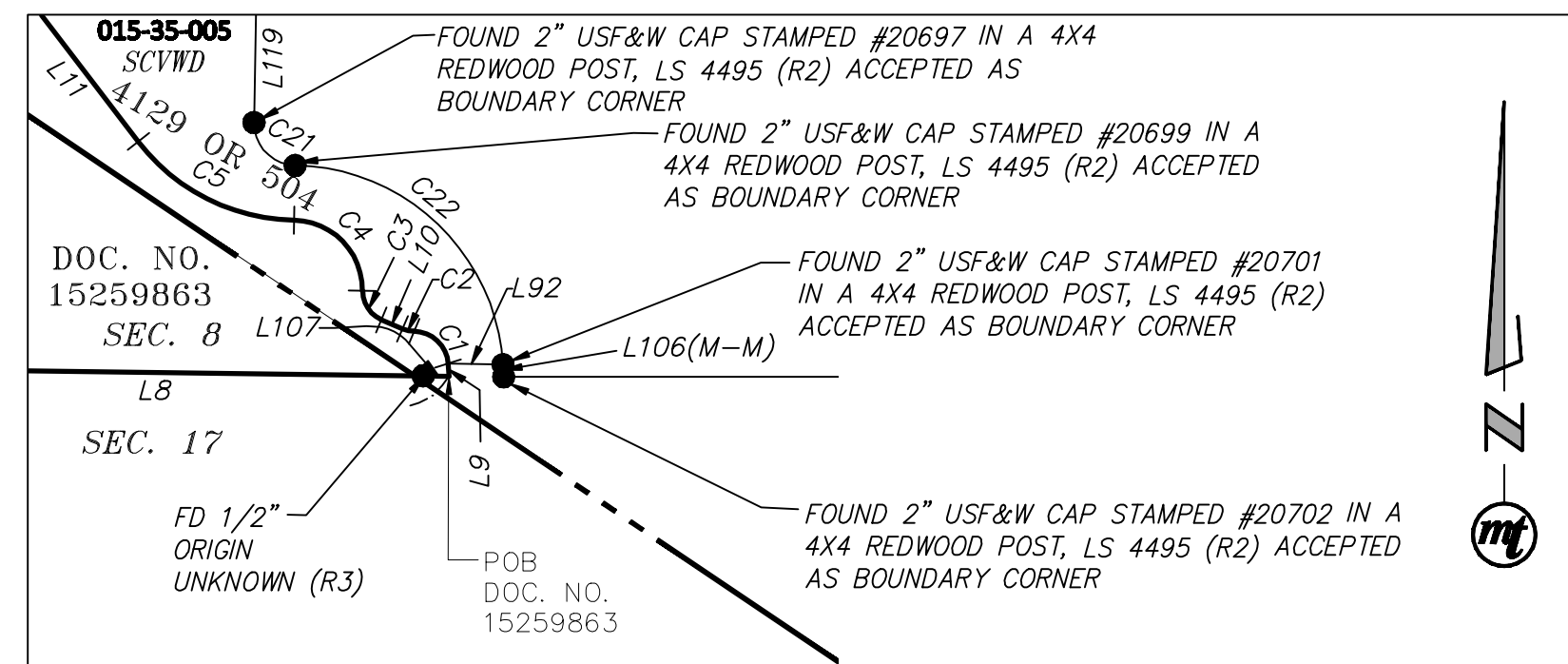
## LEGEND

- PROPERTY BOUNDARY
  - PROPERTY LINE
  - - - EASEMENT LINE
  - CITY LIMITS
  - FOUND SURVEY MONUMENT AS NOTED
  - (R1) REFERENCE NUMBER
  - (T) TOTAL
  - I.P. IRON PIPE
  - PM PARCEL MAP
  - ROS RECORD OF SURVEY
  - SCVWD SANTA CLARA VALLEY WATER DISTRICT
  - USF&W UNITED STATES FISH AND WILDLIFE
  - M-M MONUMENT TO MONUMENT
- SEE SHEET 1 FOR BASIS OF BEARINGS AND NOTES  
 SEE SHEET 2 FOR PROJECT CONTROL

## DETAIL "C" SCALE 1"=250'



## DETAIL "D" SCALE 1"=500'



## REFERENCES

- (R1) 256 M 28 (ROS)
- (R2) 767 M 21 (ROS)
- (R3) 180 M 2 (ROS)
- (R4) 532 M 36 (ROS)
- (R5) 496 M 2 (PM)
- (R6) 6829 OR 334
- (R7) DOC. NO. 22617693 OR
- (R8) 717 M 42 (PM)
- (R9) 830 M 16 (ROS)
- (R10) "I" M 45 (J.T. MURPHY SUBDIVISION NO. 3)
- (R11) DOC. NO. 15259863 OR
- (R12) 6016 OR 80
- (R13) 3207 OR 619
- (R14) 3818 OR 507
- (R15) 782 M 34 (ROS)
- (R16) 4129 OR 504

LINE TABLE				
LINE	BEARING	LENGTH	(RECORD)	
L1	S14°42'41"W	154.80'	154.81'	(R12)
L2	N66°21'07"W	432.17'	413.73'	(R12)
L3	S79°14'18"E	2164.08'	2164.49'	(R9)
L4	S80°13'52"E	104.90'	104.89'	(R11)
L5	S89°07'35"E	808.40'	808.62'	(R11)
L6	S80°13'50"E	518.28'	518.25'	(R11)
L7	S00°58'45"W	144.11'	136.05'	(R11)
L8	S89°16'15"E	1591.70'	1319.93'	(R11)
L9	N03°54'53"W	34.58'	34.91'	(R11)
L10	N66°59'11"W	63.27'	63.27'	(R11)
L11	N37°29'11"W	972.87'	972.66'	(R11)
L12	N46°55'17"W	385.94'	386.11'	(R11)
L13	N18°34'24"W	93.90'	93.90'	(R11)
L14	N04°57'52"W	182.70'	182.70'	(R11)
L15	N09°35'47"E	126.80'	126.80'	(R11)
L16	N27°13'58"E	168.60'	168.60'	(R11)
L17	N12°07'16"E	119.60'	119.60'	(R11)
L18	N37°09'09"E	51.40'	51.40'	(R11)
L19	N10°24'52"W	121.00'	121.00'	(R11)
L20	N35°03'32"W	111.30'	111.30'	(R11)
L21	N50°27'00"W	581.80'	581.80'	(R11)
L22	N43°09'01"W	90.60'	90.60'	(R11)
L23	N20°57'02"W	605.20'	605.20'	(R11)
L24	N29°41'06"W	177.40'	177.40'	(R11)
L25	N73°33'03"W	51.00'	51.00'	(R11)
L26	N04°32'25"W	87.30'	87.30'	(R11)
L27	N64°17'19"W	196.40'	196.40'	(R11)
L28	N85°19'47"W	62.20'	62.20'	(R11)
L29	N39°17'32"W	64.70'	64.70'	(R11)
L30	N80°32'41"W	140.90'	140.90'	(R11)
L31	N86°18'27"W	126.30'	126.30'	(R11)
L32	S62°47'43"W	513.00'	513.00'	(R11)
L33	S69°20'03"W	276.90'	276.90'	(R11)
L34	N85°49'19"W	125.30'	125.30'	(R11)
L35	N66°17'30"W	114.60'	114.60'	(R11)
L36	N60°03'14"W	100.30'	100.30'	(R11)
L37	N33°17'08"W	240.00'	240.00'	(R11)
L38	N35°59'38"W	72.41'	-	
L39	N03°39'22"E	217.80'	217.80'	(R14)
L40	N30°40'22"E	217.80'	217.80'	(R14)
L41	N62°16'22"E	534.60'	534.60'	(R14)
L42	N45°57'22"E	244.20'	244.20'	(R14)
L43	N37°16'22"E	198.00'	198.00'	(R14)
L44	N20°44'22"E	231.00'	231.00'	(R14)
L45	N03°19'22"E	63.23'	63.23'	(R14)
L46	N89°03'38"W	4743.89'	-	
L47	N00°51'45"E	250.29'	191.40'	(R6)
L48	N50°58'15"W	325.25'	325.25'	(R6)
L49	N49°14'24"W	1145.73'	1145.75'	(R6)
L50	N44°34'54"W	217.60'	217.58'	(R7)
L51	S47°22'55"W	169.80'	169.80'	(R2)(R7)
L52	S48°05'06"W	134.23'	134.23'	(R2)(R7)
L53	S40°58'07"W	124.03'	124.03'	(R2)(R7)
L54	S37°08'35"W	236.97'	236.97'	(R2)(R7)
L55	S34°15'25"W	264.76'	264.76'	(R2)(R7)
L56	S35°58'37"W	264.37'	264.37'	(R2)(R7)
L57	S35°04'13"W	331.65'	331.65'	(R2)(R7)
L58	S34°55'39"W	226.76'	226.76'	(R2)(R7)
L59	S33°24'11"W	223.03'	223.03'	(R2)(R7)
L60	S36°04'53"W	508.44'	508.44'	(R2)(R7)

LINE TABLE				
LINE	BEARING	LENGTH	(RECORD)	
L61	S36°24'34"W	306.71'	306.71'	(R2)(R7)
L62	S34°43'41"W	358.74'	358.74'	(R2)(R7)
L63	S17°56'28"W	253.35'	253.35'	(R2)(R7)
L64	S16°29'19"W	207.02'	198.09'	(R7)
L65	S73°54'28"E	161.82'	161.82'	(R7)
L66	S72°55'23"E	471.27'	471.27'	(R7)
L67	S74°39'30"E	146.87'	146.87'	(R7)
L68	S75°12'06"E	289.11'	289.11'	(R7)
L69	S75°17'26"E	158.56'	158.56'	(R7)
L70	S70°41'30"E	166.22'	166.22'	(R7)
L71	S72°47'57"E	107.51'	107.51'	(R7)
L72	S73°43'04"E	717.06'	716.57'	(R7)
L73	S74°00'42"E	48.16'	50.67'	(R7)
L74	S16°13'21"W	50.62'	51.21'	(R7)
L75	S01°49'24"E	75.51'	75.51'	(R7)
L76	S66°34'56"E	348.98'	348.98'	(R7)
L77	S67°35'33"E	348.69'	348.69'	(R7)
L78	S67°33'31"E	433.58'	433.58'	(R7)
L79	S65°36'02"E	452.03'	452.03'	(R7)
L80	S66°36'53"E	543.68'	543.68'	(R7)
L81	S65°24'31"E	380.73'	380.73'	(R7)
L82	S75°17'32"E	522.19'	-	
L83	N66°21'07"W	1538.08'	1537.90'(R9)1539.12'(R13)	
L84	S15°45'32"W	1439.09'	1439.19'(R8)1439.48'(R9)1439.15'(R5)(R6)	
L85	S74°14'41"E	785.82'	785.53'(R1)	
L86	S74°14'24"E	693.24'	-	
L87	N74°15'11"W	225.22'	225.22'(R2)	
L88	N15°36'56"E	1166.61'	1166.66'(R10)	
L89	N80°13'52"W	522.97'	-	
L90	N74°15'11"W	65.00'	65.01'(R1)	
L91	N74°15'11"W	693.25'	691.66'(R1)	
L92	S89°06'23"W	150.25'	150.00'(R16)	
L93	N66°21'07"W	563.31'	574.88'(R12)	
L94	N66°21'07"W	484.34'	484.60'(R9)466.09'(R12)	
L95	N66°21'07"W	974.77'	-	
L96	S74°14'41"E	785.82'	785.53'(R9)	
L97	N74°14'24"W	868.37'	868.73'(R1)868.74'(R9)	
L98	N74°15'11"W	756.66'	756.66'(R1)756.73'(R9)	
L99	N74°36'01"W	722.21'	722.21'(R1)	
L100	N74°36'01"W	25.00'	-	
L101	N74°14'24"W	65.01'	65.00'(R1)	
L102	S16°05'21"W	511.20'	511.50'(R4)(R5)(R6)(R15)	
L103	N74°36'01"W	1306.34'	1306.08'(R3)	
L104	N15°36'56"E	1216.61'	1216.66'(R3)	
L105	S66°18'46"E	484.63'	485.47'(R4)(R5)(R6)(R15)	
L106	S03°23'23"E	34.15'	34.27'(R2)	
L107	S89°15'15"E	70.93'	-	
L108	S67°26'04"E	987.47'	986.86'(R4)(R5)(R6)(R15)	
L109	N15°45'32"E	198.75'	198.75'(R1)(R9)	
L110	S79°13'31"E	279.56'	278.94'(R1)279.31'(R9)	
L111	S79°13'31"E	761.12'	761.12'(R9)	
L112	N15°45'01"E	1034.15'	1033.98'(R1)1034.20'(R9)	
L113	N15°45'01"E	501.30'	501.30'(R9)498.43'(R10)	
L114	N15°45'01"E	525.03'	-	
L115	N15°45'01"E	524.92'	525.20'(R9)520.81'(R10)	
L116	N15°45'01"E	525.20'	-	
L117	N15°45'01"E	525.20'	-	
L118	N74°14'24"W	110.11'	-	
L119	N01°00'45"E	422.02'	421.98'(R2)422.00'(R16)	
L120	N80°13'52"W	627.87'	627.75'(R1)627.81'(R9)	

CURVE TABLE				
CURVE	RADIUS	DELTA	LENGTH	(RECORD)
C1	95.00'	85°04'18"	141.05'	141.05'(R11)
C2	85.00'	22°00'00"	32.64'	36.64'(R11)
C3	84.94'	68°00'00"	100.81'	100.80'(R11)
C4	189.99'	90°00'00"	298.44'	298.44'(R11)
C5	549.97'	51°30'00"	494.34'	494.34'(R11)
C6	1170.00'	16°47'13"	342.80'	342.80'(R2)(R7)
C7	230.00'	39°59'49"	160.56'	160.57'(R7)
C8	400.00'	21°38'00"	151.03'	151.03'(R7)
C9	316.00'	50°58'21"	281.13'	281.13'(R7)
C10	516.00'	13°47'11"	124.16'	124.16'(R7)
C11	420.00'	61°45'14"	452.68'	452.60'(R1)
C12	900.00'	08°43'24"	137.03'	137.03'(R1)
C13	800.00'	08°43'07"	121.73'	121.74'(R1)
C14	1150.00'	18°28'17"	370.75'	372.33'(R1)
C15	1250.00'	18°12'13"	397.14'	397.14'(R1)
C16	370.00'	89°59'48"	581.17'	581.10'(R1)(R9)
C17	850.00'	08°43'24"	129.41'	129.42'(R1)(R9)
C18	850.00'	08°43'07"	129.34'	129.35'(R1)(R9)
C19	1200.00'	18°33'03"	388.53'	388.58'(R1)
C20	1200.00'	18°12'13"	381.26'	381.26'(R1)
C21	115.00'	90°00'00"	180.64'	180.63'(R2)180.64'(R16)
C22	580.00'	85°33'43"	866.14'	866.12'(R2)866.17'(R16)